



Otonabee
CONSERVATION



ANNUAL 2020
REPORT

A healthy natural environment where communities thrive.

Message from the 2020 Chair & CAO

At Otonabee Conservation, 2020 was a year of adaptation and resiliency.

We adapted by offering more services on-line. Customers can now reserve a campsite, make an application for a Section 28 Permit, obtain a permit to hunt on our lands, and view educational programs on-line.

We made greater use of our website and other social media platforms to communicate information about the changes in programs and services and to provide resources to support home learning.

We saw an increase in the number of people using our conservation areas. Many sent messages thanking us for helping them with their mental health by providing the places and spaces for them to get outdoors.

Many people undertook home and property improvement projects. We responded to a year over year increase in the number of planning and permitting inquiries and permit applications, which were received primarily in a compressed 9-month period. We fielded more inquiries for advice on stewardship and land restoration projects and sold seedlings to 89 different landowners.

We continued to focus on keeping people and property safe. We issued flood related messages and responded to drought conditions. We continued to support our municipalities in protecting sources of drinking water.

Otonabee Conservation continues to work with the Provincial government and our partners to implement legislative changes in a manner consistent with our mandate to protect people, property, and the environment.

Our staff has worked very hard under challenging circumstances to fulfill our conservation mandate. Throughout the year, our Board provided thoughtful leadership and direction through this unprecedented time.

We wish to thank both the staff and the Board for their dedication to our mission and for their support for each other as we collectively responded to the most unusual of years.

Stay well and be safe.



Dan Marinigh
CAO | Secretary Treasurer



Andy Mitchell
Chair, Board of Directors

2020 Board of Directors

The eight member municipalities within the Otonabee Region watershed appoint representatives to our Board of Directors.

Our eleven member board oversees the activities of the Conservation Authority and reports back to their representative municipal councils.

Township of Selwyn
Andy Mitchell (Chair)
Sherry Senis (Vice Chair)

City of Peterborough
Diane Therrien
Gary Baldwin
Kim Zippel

Township of Otonabee-South Monaghan
Joe Taylor

Township of Douro-Dummer
Karl Moher

Township of Cavan Monaghan
Ryan Huntley

City of Kawartha Lakes
Tracy Richardson

Township of Asphodel-Norwood
Paula Warr

Municipality of Trent Hills
Michael Metcalf

Watershed Overview

195,100 ha
Jurisdiction

100,717
Residents

8
Municipalities

4,742 km
Shoreline

12
Sub
Watersheds

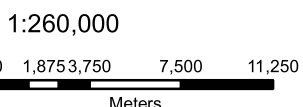
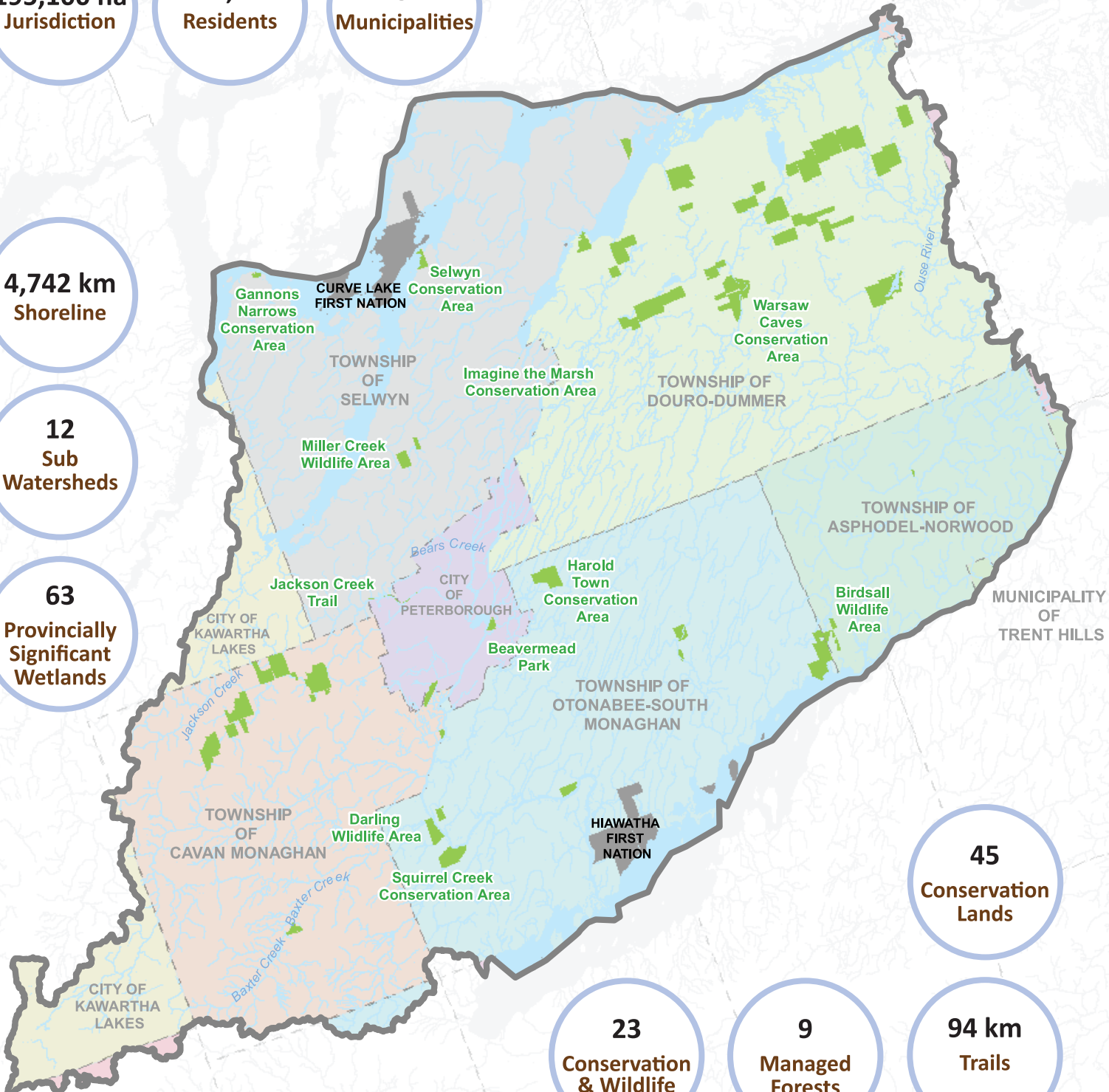
63
Provincially
Significant
Wetlands

45
Conservation
Lands

23
Conservation
& Wildlife
Areas


9
Managed
Forests

94 km
Trails




- Watershed Boundary
- Local Municipalities
- Conservation Lands
- Waterbody
- First Nations
- Watercourse

Conservation Lands

 **22,978** Campers
2,666 Campsite Bookings

15,664 campers at Beavermead Campground
7,314 campers at Warsaw Caves Conservation Area

 **6,288** Day-Use Visitors at
Warsaw Caves CA

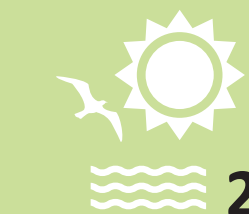
 **164** Hunting Permits Issued

 **29.5** ha of Forest Plantation
Thinned

Watershed Health

We administer water quality and quantity monitoring programs with many provincial agencies and partners.

 **11**
Groundwater
Monitoring Sites

 **20**
Surfacewater
Quality Sampling Sites

Drinking Water Source Protection

Otonabee-Peterborough Source Protection Area

We support the implementation of the Trent Source Protection Plan, which is 1 of 22 Source Protection Plans in Ontario

3 Surfacewater Systems

9 Groundwater Systems
(including 1 planned)

72 Inquiries were responded to

56 Notices Issued
under Part IV of Clean Water Act

Agreements renewed with 8 municipalities to
provide Risk Management services



Corporate Services

We ensure the effective and efficient delivery of programs and services for our watershed residents



93,062 NEW Website Users!

130+ News Items in Local Media

47% ↑ *Your Watershed News,*
E-newsletter subscribers

43% ↑ Social Media Followers on
Twitter, Facebook, & Instagram

Community Engagement & Education

We hosted 2 workplace and 2 virtual placements with Trent University undergraduate students, and one secondary student workplace placement.



243

Post secondary
students attended 5
virtual presentations



25

Youth participated in
the virtual
Bondar Challenge



33

Secondary students
participated in tree
planting activities



129

Students attended a
Spring Water
Awareness Program

Natural Hazards

We protect life and property from flooding and other natural hazards



23 Flood Messages Issued

9 Water Safety Statements
8 Flood Watch Messages + 1 update
2 Flood Warnings + 4 updates



Level 1 and Level 2 Low Water Conditions Declared

Plan Review & Permitting

We protect people & properties from loss of life and damage by reviewing applications to minimize risks from natural hazards



324 Permits Issued Under Conservation Authorities Act

239 Planning Files Commented on

536 Preconsultation files

17 Average Number of Days to Issue a Minor Permit

Floodplain Mapping



Our commitment to improved floodplain information for our watershed residents continues!

- 2014 | Board of Directors approved, *Strategy for the Acquisition and Management of Floodplain Mapping*
- 2017 | Meade Creek & Curtis Creek commenced
- 2018 | Kawartha Lakes South commenced
- 2019 | Kawartha Lakes North, Lakefield, Norwood, Baxter Creek and Jackson Creek commenced
- 2019 | Kawartha lakes North & South released to the public (1,667 km)
- 2020 | Meade Creek released to the public (71 km)
- 2020 | Thompson Creek commenced
- 2020 | Lakefield (70 km), Norwood (42 km), Baxter Creek (77 km), Jackson Creek (53 km), & Thompson Creek (5.3 km) preliminary mapping completed in draft (247.3 km)
- 2021 | Lakefield, Norwood, Baxter Creek, Jackson Creek, & Thompson Creek to be released to the public

Natural Resources Conservation & Stewardship

We advance and contribute to the maintenance of a healthy and resilient natural environment



8,100

Native Trees & Shrubs Planted



6.4

ha of Habitat Enhanced



3.5M+

kg Carbon Sequestered by Trees Planted



8,450

Trees Planted by Residents

2020 Year at a Glance

Meade Creek Floodplain Maps Available

Interactive floodplain maps became available to watershed residents

Camping Season Postponed

until further notice

Tree Seedling Pickup 8,450 trees and shrubs were picked up by local landowners with contactless, curbside pickup

February

March

April

May

June

July

Online Campsite Reservation System Went Live

A new campsite booking system went live online, attracting 223 bookings on its opening day

Office Closed to the Public All staff required to work remotely. Conservation Areas and trails remained open for walk-through access with safety protocols in place

Health & Safety Staff developed 12 new Standard Operating Procedures, 20+ informational signs, and installed infection prevention measures at buildings to keep staff and clients safe during the pandemic

Minister's Letter gave direction for Conservation Authority Board of Directors to meet virtually during the state of emergency

Step Into Nature At Home New webpage was created to highlight educational resources for families, teachers, and students to access during school closures and the state of emergency

2 Capital Projects Completed!

Construction completed on a new fully accessible gatehouse at Warsaw Caves CA and a fully accessible washroom at Beavermead Campground

Gates Opened for Camping, Beaches, and More! After a delay in opening, most facilities opened up for the camping season

Mikinaak (Turtle) Crossing Signs Installed at Curve Lake First Nation

Anishnabemowin & English language signs installed in partnership with Curve Lake First Nation with funding from Environment & Climate Change Canada

Section 34 Amendment Approved

for the Trent Source Protection Plan related to upgrades to the Pinewood municipal drinking water system

Bondar Challenge 25 youth participated in 2 virtually delivered camp sessions in partnership with Riverview Park & Zoo

New Online Forms Hunting Permit Application & Section 28 Permit Inquiry Forms became available for submission online to enhance customer service and accessibility

Minister's Letter gave direction for Conservation Authority Board of Directors to continue to meet virtually.

84 Native Trees & Shrubs Planted at Siemens Peterborough with funding from Tree Canada

Climate Change Strategy Implementation Plan approved by the Board of Directors at the December Board Meeting

Changes to Conservation Authorities Act Bill 229 passed in the Ontario legislature

August

September

October

November

December

600 Native Trees Planted at Harold Town Conservation Area with funding from One Tree Planted and Forests Ontario

78 Native Trees & Shrubs Planted at Peterborough Regional Health Centre in honour of frontline workers, with funding from TD Canada Trust

1,250 Native Trees & Shrubs Planted by local students at Meadows and Towerhill South stormwater ponds, in partnership with City of Peterborough

2,200 Native Trees Planted by local students as part of a stewardship project with a local landowner in Otonabee-South Monaghan Township, with funding from One Tree Planted and Forests Ontario

Monitoring Station Data Available Online Precipitation and water level data became available on our website via an interactive map and summary tables that are updated daily

Changes to Conservation Authorities Act Province of Ontario released budget including proposed changes to Act under Bill 229, Schedule 6

Letter to the Province Board of Directors sent letter to province outlining concerns with Schedule 6 and urging them to remove Schedule 6 from Bill 229

1,500 Native Trees Planted by local students to help rehabilitate a gravel pit in Selwyn Township, with funding from One Tree Planted, Forests Ontario, and Selwyn Township

30 Native Trees & Shrubs Planted at Brock Mission men's shelter in support of the community's most vulnerable people, with funding from TD Canada Trust

 COVID-19 Pivot Point

 Board / Governance

 Operational Milestone

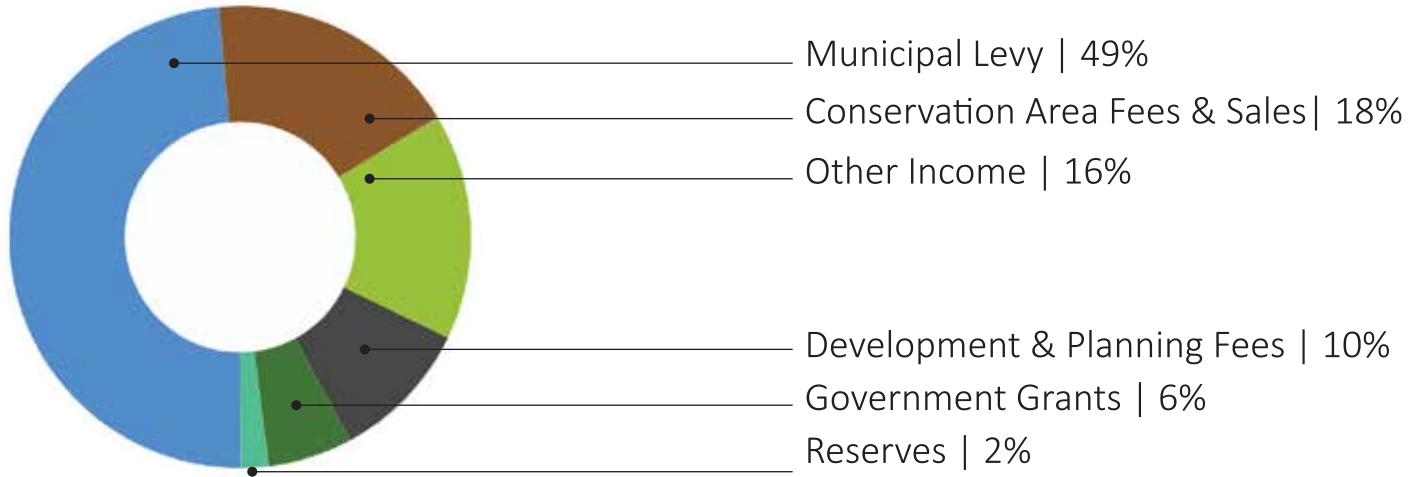
 Partnership Project

Financials

We deliver a variety of programs and services that support the sustainability of the environment

Thank you to our member municipalities for your contributions, which further our work together on a watershed basis!

2020 Budget Revenue | \$3.2 Million



2020 Budget Expenses



Revenues and Expenses representative of 2020 Budget
Audited financial statements will be available in June 2021

Donors & Grants

We are grateful for generous contributions from individual donors, local organizations, foundations, and community partners who help make our work possible!

Conservation Guardian

\$10,000- \$49,000

Community Foundation of Greater Peterborough
TD Canada Trust

Conservation Steward

\$5,000- \$9,999

Anonymous Donor
One Tree Planted
Project Learning Tree

Conservation Supporter

\$1,000- \$4,999

Forest Ontario
Tree Canada
The Great Trail \ Trans Canada Trail

Conservation Friend

\$250- \$999

Alan and Linda Slavin
The Zippel Family
Anne Hollingsworth

Conservation Donor

up to \$249

Tanya Moore
Northern Casket
Michael Mackey
Leah Manley
Karen Halley
J. Clinesmith and M. Skinner
Patricia Dillabough
Dan and Julie Brandsma



Native Tree Planting | Selwyn Township

Government Funding We are grateful for government funding received in 2020

Public Safety Canada | National Disaster Mitigation Program

Ministry of Environment, Conservation & Parks | Drinking Water Source Protection

Employment & Social Development Canada | Accessibility Fund

Ministry of Natural Resources & Forestry | Flood Management Program



Otonabee
CONSERVATION

Otonabee Region Conservation Authority
250 Milroy Drive
Peterborough, Ontario, K9H 7M9

Tel: (705) 745-5791

Fax: (705) 745-7488

Email: otonabeeca@otonabeeconservation.com

   @OtonabeeC
otonabeeconservation.com